

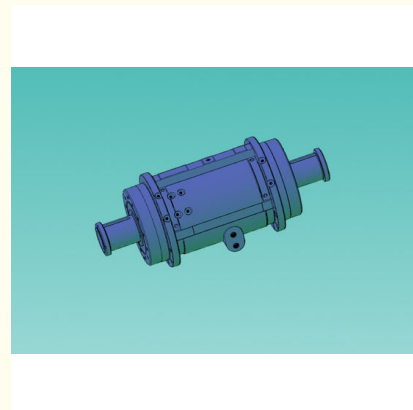


H150N2 TIT Industrial Fan Accessories Main Bearing Box Rust Resistance

Our Product Introduction

Basic Information

- Place of Origin: Shanghai
- Brand Name: YIKU
- Model Number: H150N2
- Minimum Order Quantity: 1 piece
- Price: negotiable
- Packaging Details: Wooden box
- Delivery Time: 2-3 weeks
- Payment Terms: L/C, T/T
- Supply Ability: 10 units/month



Product Specification

- Maximum Speed: 1800r/min
- Maximum Oil Quantity: 9L
- Tightening Torque: 60Nm
- Maximum Diameter: 515mm
- Total Length: 1257mm
- Grease: Rust Resistant Oil
- Highlight: **Industrial Fan Accessories Bearing Box,
Bearing Box Rust Resistance,
Industrial Fan Accessories Rust Resistance**

for more products please visit us on axialfanparts.com

Product Description

H150N2 main bearing box

1. 套装 承内圈,叶 前,相 的配合面及 端螺 ,然后 防 油.
2. 加工面 防 油.
3. ,叶 上硬膜油脂,并用油 包扎.
4. 承箱最高工作 速: $n=1800\text{r/min}$.
5. 最高油位 的油量: $V=9\text{L}$.
6. 承箱盖螺 的 力矩: $M/A=60\text{Nm}$.

主 和 承同置于一 箱体内,此箱体同心地安装在 机下半机 中并用螺栓固定.

在主 的 端各装一个 柱 承用以承受径向力, 了承受 向力,在近 器端装有向心推力球 承,承担逆气流方向的 向力.送 机装有一个向心推力球 承,一次 机装有二个向心推力球 承.

1. Set the inner ring of the bearing, the front of the impeller, the corresponding shaft mating surface and both ends of the thread plated with copper, and then coated with anti-rust oil.
2. Coating the processing surface with anti-rust oil.
3. When storing in the warehouse, the journal of the blade wheel should be coated with hard film grease and wrapped with oil paper.
4. Maximum working speed of bearing box : $n=1800\text{r/min}$.
5. Oil quantity at the highest oil level : $V=9\text{L}$.
6. Tightening torque of bearing box cover screw : $M/A=60\text{Nm}$.

The main shaft and the rolling bearing are placed in a cast iron housing, which is centrally installed in the lower half housing of the fan and bolted.

A roller bearing is installed at each end of the spindle to bear the radial force. In order to bear the axial force, a centripetal thrust ball bearing is installed at the end of the near coupling to bear the axial force in the direction of the reverse airflow. The fan is equipped with a centripetal thrust ball bearing, and the primary fan is equipped with two centripetal thrust ball bearings.



Shanghai YIKU Power Equipment Co., Ltd



8613916002258



657925203@qq.com



axialfanparts.com

5587 Dongchuan Road, Pudong New Area, Shanghai